

## Risks of treatment without actual testing of hormone levels -

- Increased blood pressure
- Endometrial cancer (uterine cancer)
- Fibroid growth
- Gallbladder disease
- Over 15 years, at least twice the risk of breast cancer

What could we have found out if we had tested her saliva hormone levels? We would have known that she has too much estrogen, not enough progesterone to balance the estrogen, low DHEA, and marginal testosterone.

But, she felt good on the estrogen, many will say. Yes, however, the silent killers (cancer, blood pressure, heart disease) rarely make anyone feel bad at the start. Her best course is a new treatment plan, designed around the objective saliva hormone measurements.

Ask your healthcare provider for the PostM™ or the expanded panel - ePostM™ to measure your hormones.

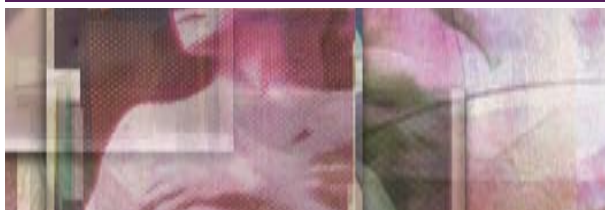
## ARBITRARILY GIVEN HORMONES MAY DEAL WITH THE SYMPTOMS BUT MAY POSE OTHER SERIOUS HEALTH RISKS

### How do you benefit?

There are five distinct areas that you will benefit from using the saliva tests.

1. They are affordable and less expensive than blood or urine tests. Blood testing for 6 hormones costs \$250-\$300 more than saliva testing.
2. Collection procedure spares you the pain of venipunctures with a needle.
3. Results are more clinically reflective of your hormone status and needs.
4. Results can lead to an individualized and customized treatment plan using natural hormones.
5. You will minimize overdosing and underdosing. This will insure that you use only the proper hormones in the appropriate amounts.

*With salivary hormone testing,  
guesswork is past news.*



- The Post-Menopause Hormone Panel™ (PostM™) helps determine the risk of disease in your breast or uterus, and also allows for individualized recommendation of ways to minimize this risk
- Taking hormones without analysis and a determination of the true need for specific hormones entails unnecessary risk of possible serious side effects
- The correct hormone panel along with the assistance of your doctor, will aid in prevention and treatment of osteoporosis
- Our test helps you to know for certain whether you are in menopause or in perimenopause



**DIAGNOS-TECHS, INC.**

6620 S. 192nd Place • Bldg. J • Kent • WA • 98032  
www.diagnostechs.com

© 2007 Diagnos-Techs, Inc. All rights reserved. 01/08 03\_DTI/postm\_ptnt

## Post-Menopause Hormone Panel™

Saliva Testing for Bio-Identical Hormone Treatment



**DIAGNOS-TECHS, INC.**  
diagnostechs.com

# Menopausal Hormone Panels™

Literally, menopause means the cessation of the monthly menstrual cycle and signals the end of a woman's natural childbearing years. Menopause is neither a disease nor an illness, it is a natural and usually gradual change in glandular function. It has its origins in the beginning of menses and culminates in a series of hormonal changes that result in the cessation of menstrual flow. This transition produces a variety of bodily manifestations and symptoms, due to changes in the production of hormones and the timing of their release.

## THE RIGHT BALANCE OF HORMONES IS IMPORTANT TO LONG-TERM EMOTIONAL, MENTAL & BODILY HEALTH

Various body parts undergo change and can produce one or more of the following symptoms:

### Endocrine-

- Bleeding irregularities
- Vaginal dryness
- Hot flashes / sweats
- Changes in sex drive

### Nervous System-

- Insomnia
- Nervousness, irritability
- Headache
- Mood Changes
- Depression

### Metabolic Changes-

- Skin aging / cosmetic changes
- Osteoporosis
- Altered fat and carbohydrate metabolism
- Atherosclerosis

## What can you do about it?

There are several therapeutic options which may minimize or even eliminate many of the symptoms:

1. Treat symptoms using synthetic hormones without hormone level testing.
2. Treat symptoms using natural hormones without any testing.
3. Treat and **correct** symptoms using natural hormones with testing for hormone levels before and after treatment.

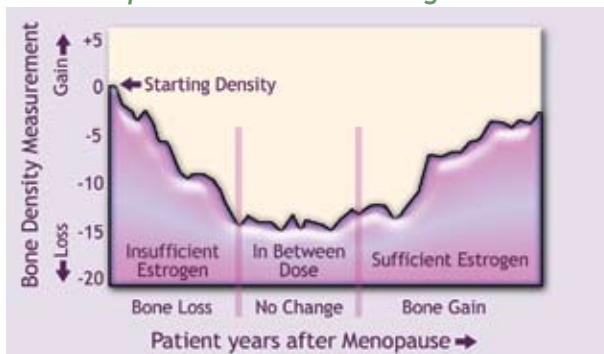
**HORMONE LEVELS FROM WOMAN TO WOMAN CAN VARY FROM 200-1,500%!**

## Why should you test?

Hormones are powerful substances that control multiple functions throughout the body. Hormone levels should be sufficient and balanced. Too much or too little is not conducive to long term emotional, mental and bodily health.

By not measuring the hormones before and after treatment your hormone picture is, at best, an educated guess, since hormone levels from woman to woman can vary 200 - 1,500%. In fact, many women need only one hormone, while others require 3 or 4 different kinds.

### Bone Density Changes in Normal Postmenopausal Women on Estrogen



Just as you cannot balance your bank account without numbers on your bank statements, hormone testing provides both a basis for treatment and proximity to your goal.

One can then:

- Customize natural hormone dosing to meet individual needs
- Optimize hormone levels for minimum dose to relieve symptoms - avoid overdosing
- Achieve appropriate and compatible physiologic levels of several hormones
- Increase sense of "well being" by removing underlying hormone deficit and imbalances

## What do we test for and what does it tell you?

We test for male and female natural hormones. One, two, six or eight of them, depending on your need. We utilize your saliva as a sample for measuring hormones, such as Testosterone, DHEA, Progesterone, Estriol, Estrone, Estradiol, Dihydrotestosterone\* and Androstenedione\*.

The brain derived regulating hormones, FSH\*\* and LH,\*\* are also measured to help assess efficacy of control and feedback between the brain and ovaries.

Saliva hormone values reflect the tissue concentration of your hormones. Blood and serum contain the total hormone, but your tissues are only bathed with the active or effective fraction as found in saliva. Active fraction measurements are superior to blood and urine measurements both in diagnosis and treatment.

\*Part of the Male Hormone Test™ \*\*Included in the expanded panel, the ePostM™

## How can we help you?

Let us take a common example:

A woman suffers from several symptoms-migraines, hot flashes and emotional fragility. She is having irregular periods, one every 6-8 months. Her doctor treats her with natural estrogens, but he does not do any testing to determine quantities or types of hormones that will meet her specific needs. The symptoms are under control, but her risks are increased (*continued on trifold flap*)